

## Brick slip lintels

The following pages show a range of lintels designed to be used with bonded brick slips or mechanically fixed slotted bricks. We have used a 25 mm slip on the details, but slips can be any dimension as required. We have shown the most common details in the following pages, but the available designs are almost endless, if your requirements are not shown please do not hesitate to contact us.

### **C Section range, light duty, Soldier Brick or Gauged Arch**

C section range end bearing detail	Page 1
C section range load tables	Page 2

### **B Section range, heavy duty, Soldier Brick or Gauged Arch**

B section range end bearing detail	Page 3
B section range 215 high load tables	Page 4
B section range 290 high load tables	Page 5
B section range 365 high load tables	Page 6

### **L Section range, Stretcher Bond**

L section range light duty 65 x 103 mm	Page 7
L section range medium duty 65 x 103 mm	Page 8
L section range light duty 65 x 215 mm	Page 9
L section range medium duty 65 x 215 mm	Page 10

### **Exposed soffit lintels using Full Brick**

T section range end bearing detail	Page 101
T section range Soldier or Gauged brick 215 mm high	Page 102
T section range Soldier or Gauged brick 290 mm high	Page 103
T section range Soldier or Gauged brick 365 mm high	Page 104
CC range Stretcher bond LA160 65-103, LA215 65-103	Page 105
CC range Stretcher bond CS 65-103	Page 106
CC range Stretcher bond CM65-103, CM/4 65-103	Page 107
CC range Stretcher bond LA160 65-215	Page 108
CC range Stretcher bond LA215 65-215	Page 109
CC range Stretcher bond CS 65-215	Page 110
CC range Stretcher bond CM 65-215	Page 111
CC range Stretcher bond CM/4 65-215	Page 112
CC range examples, soldier, header, etc.	Page 113

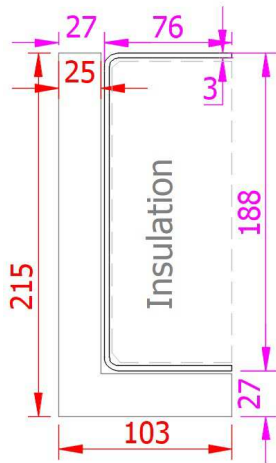
### **Feature brick lintels**

We also manufacture all our standard lintels with a feature brick detail, these also allow an exposed 103 mm brick soffit. Brickwork is built on site using precut gauged brick arch sets, or soldier bricks. Details here (Martin—link to stainless steel pages 74-75)

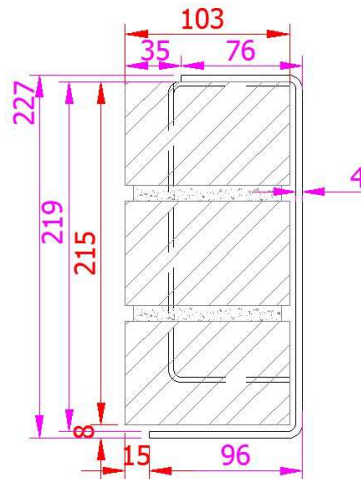
## Brick slip lintels

### C Section range end bearing detail

Section at span:

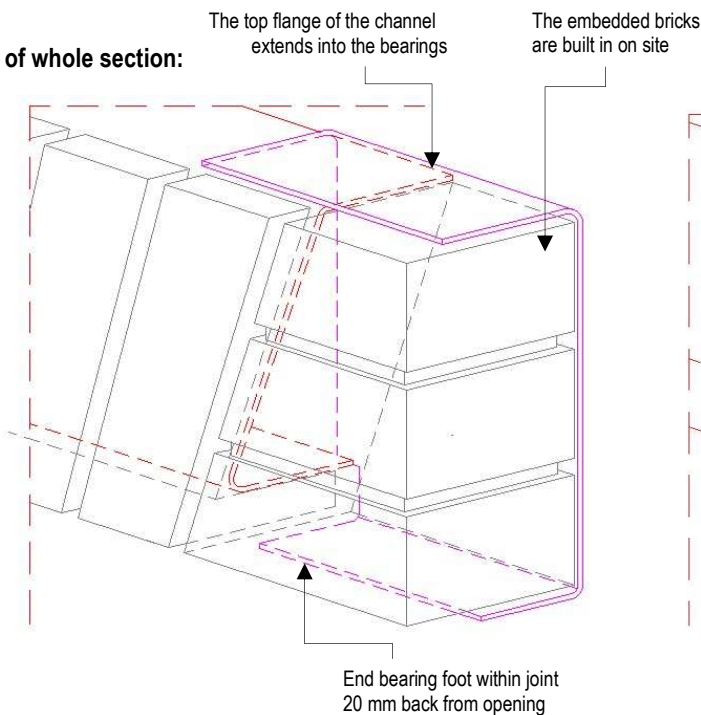


Section at bearing:

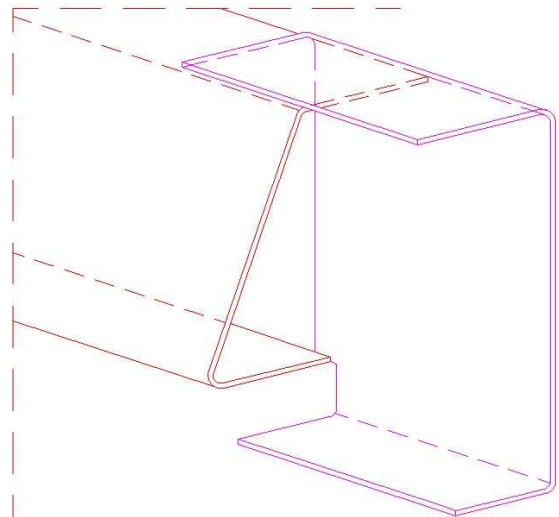


C 215/, C290/3, C365/3 are light duty sections of B215/3, B290/3 and B365/3. Both C and B ranges suit soldier course or gauged brick arches. Slips are 25 mm as standard, 30 mm or other slip sizes can also be used.

View of whole section:



View of the steel:



The section provides a bearing on the top flange with second bearing at the "foot".

Default material stainless steel SS370 (EN 1.4003) also available in stainless steel LDX2101 (EN 1.4162) or S250GD + Z600.

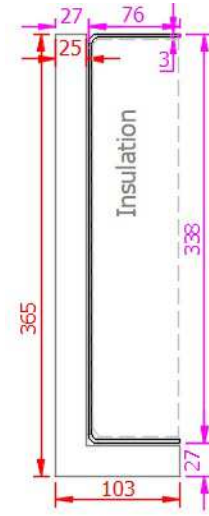
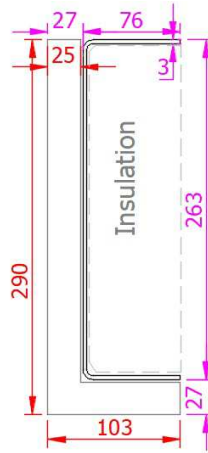
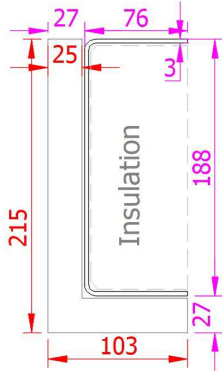
The safe working load SWL represent the maximum factored load uniform distributed load the lintel can carry. 102.5 mm width brickwork is taken as 2.2 kN/m<sup>2</sup>.

**Bearings;** min 150mm each side, for high loads longer bearings may be needed, and bearing stresses should be checked

# Brick slip lintels

## C Section range load tables

Section at span:



### C 215 / 3

Lintel section properties

lxx	523.7	cm <sup>4</sup>
Zxx	65.2	cm <sup>3</sup>
Weight	7.9	kg/m
Area	9.8	cm <sup>2</sup>
Ryy	2.33	cm

### C 290 / 3

Lintel section properties

lxx	1161.2	cm <sup>4</sup>
Zxx	106.2	cm <sup>3</sup>
Weight	9.7	kg/m
Area	12.1	cm <sup>2</sup>
Ryy	2.20	cm

### C 365 / 3

Lintel section properties

lxx	2138.3	cm <sup>4</sup>
Zxx	155.7	cm <sup>3</sup>
Weight	11.5	kg/m
Area	14.3	cm <sup>2</sup>
Ryy	2.08	cm

#### Lintel load Capacity Table

Opening Span	Lintel Length	Safe Load kN
600	900	30.0
750	1050	30.0
900	1200	30.0
1050	1350	30.0
1200	1500	30.0
1350	1650	30.0
1500	1800	30.0
1650	1950	30.0
1800	2100	27.5
1950	2250	24.3
2100	2400	20.4
2250	2550	18.8
2400	2700	16.4
2550	2850	14.1
2700	3000	11.0

#### Lintel load Capacity Table

Opening Span	Lintel Length	Safe Load kN
600	900	40.0
750	1050	40.0
900	1200	40.0
1050	1350	40.0
1200	1500	40.0
1350	1650	40.0
1500	1800	40.0
1650	1950	40.0
1800	2100	40.0
1950	2250	40.0
2100	2400	35.7
2250	2550	30.1
2400	2700	26.9
2550	2850	21.9
2700	3000	19.0

#### Lintel load Capacity Table

Opening Span	Lintel Length	Safe Load kN
600	900	50.0
750	1050	50.0
900	1200	50.0
1050	1350	50.0
1200	1500	50.0
1350	1650	50.0
1500	1800	50.0
1650	1950	50.0
1800	2100	50.0
1950	2250	50.0
2100	2400	50.0
2250	2550	50.0
2400	2700	42.5
2550	2850	31.6
2700	3000	25.0

The section provides a bearing on the bottom flange with second bearing at the "foot".

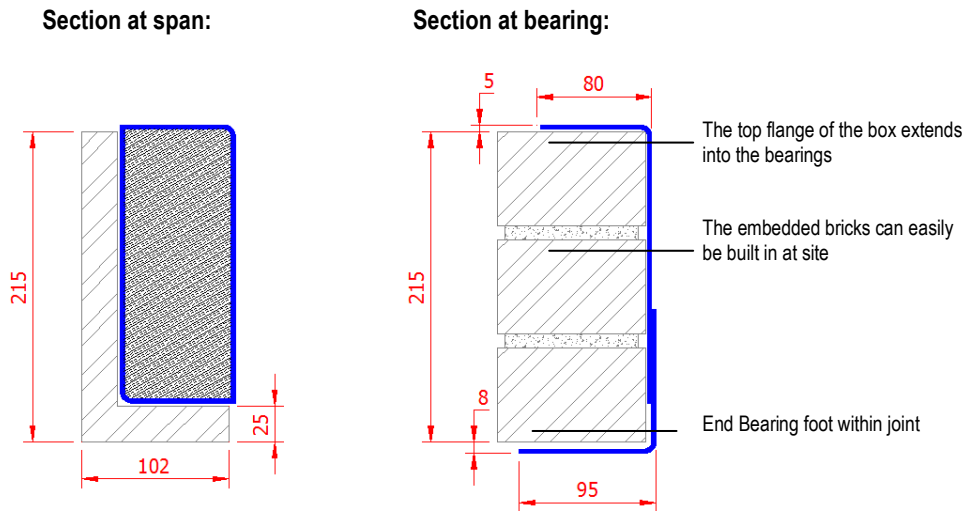
Default material stainless steel SS370 (EN 1.4003) also available in stainless steel LDX2101 (EN 1.4162) or S250GD + Z600.

The safe working load SWL represent the maximum factored load uniform distributed load the lintel can carry. 102.5 mm width brickwork is taken as 2.2 kN/m<sup>2</sup>.

**Bearings;** min 150mm each side, for high loads longer bearings may be needed, and bearing stresses should be checked

## Brick slip lintels

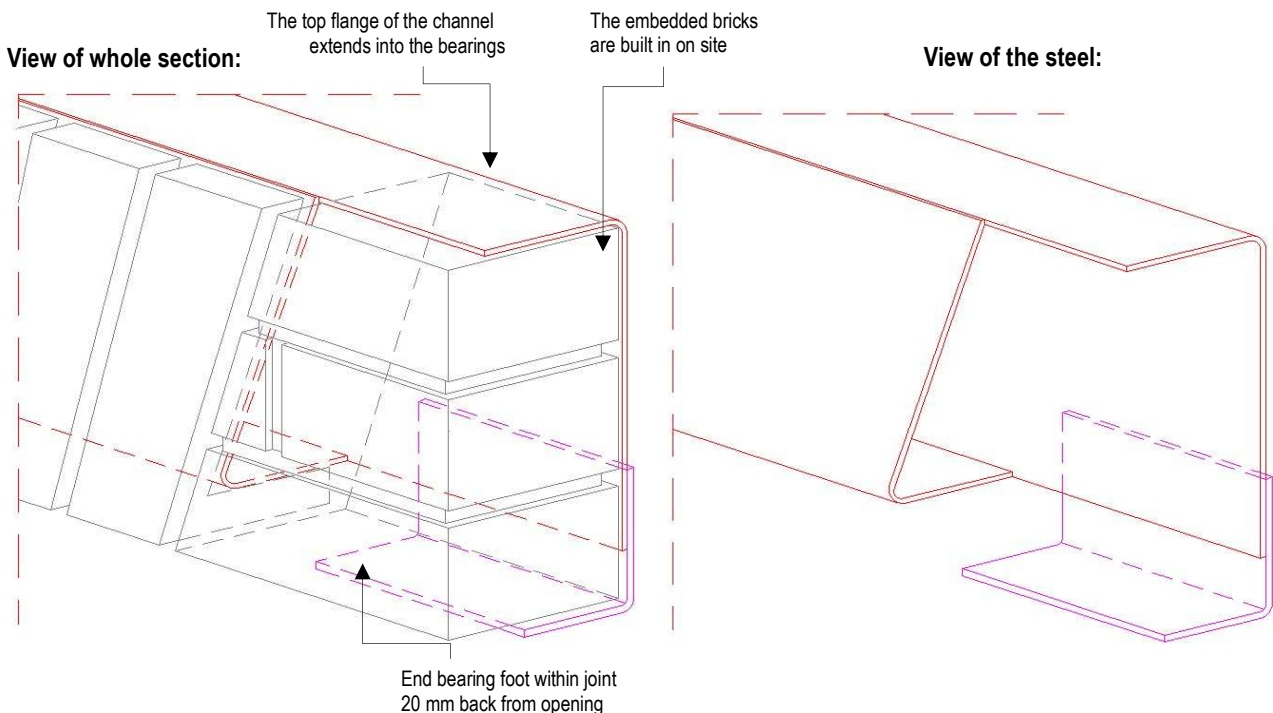
### B section range end bearing detail



Stainless steel box are ideal to support brick slips. Fast, reliable, high load and low weight compared to the concrete alternative.

Our unique bearings allow site brickwork to be built butting the brick slip arch, this system gives both a high and low level bearing.

B 215/3, B290/3, B365/3 are heavy duty sections of C215/3, C290/3 and C365/3. Both C and B ranges suit soldier course or gauged brick arches. Slips are 25 mm as standard, 30 mm or other slip sizes can also be used.

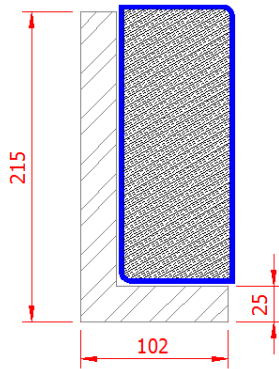


The section provides a bearing on the top flange with a second bearing at the "foot". Full bricks are laid up to the gauged brick eliminating the need for slips on site. Default material stainless steel SS370 (EN 1.4003) also available in stainless steel LDX2101 (EN 1.4162). Loadings are shown above to assist you in your selection 102.5mm brickwork is 2.2 kN/m<sup>2</sup>. Dimensions can be varied to suit imperial, other brick sizes and thicker slips

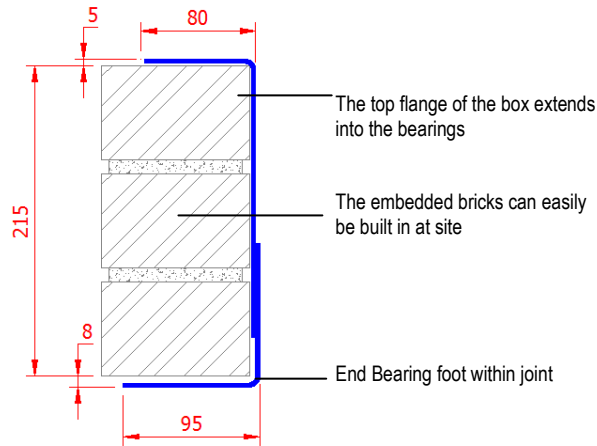
# Brick slip lintels

## B section range 215 mm high

**Section at span:**



**Section at bearing:**



The top flange of the box extends into the bearings

The embedded bricks can easily be built in at site

End Bearing foot within joint

### B215/3

Lintel section properties

lxx	744.7 cm <sup>4</sup>
Zxx	77.2 cm <sup>3</sup>
Weight	12.7 kg/m
Area	15.9 cm
Ryy	3.5 cm

### B215/4

Lintel section properties

lxx	978.7 cm <sup>4</sup>
Zxx	101.4 cm <sup>3</sup>
Weight	16.8 kg/m
Area	21.0 cm
Ryy	3.5 cm

### B215/6

Lintel section properties

lxx	1483.4 cm <sup>4</sup>
Zxx	151.4 cm <sup>3</sup>
Weight	25.3 kg/m
Area	31.6 cm
Ryy	3.5 cm

**Lintel load Capacity Table**

Opening Span	Lintel Length	Safe Load kN	Load Example
600	900	180.1	
900	1200	120.0	
1200	1500	90.0	
1500	1800	72.0	
1800	2100	60.0	
2100	2400	51.4	
2400	2700	44.6	
2700	3000	39.2	
3000	3300	32.5	Full height
3300	3600	26.8	masonry
3600	3900	22.6	1500 mm
3900	4200	19.2	masonry
4200	4500	16.6	
4500	4800	14.4	
4800	5100	12.7	
5100	5400	11.2	
5400	5700	10.0	
5700	6000	9.0	

**Lintel load Capacity Table**

Opening Span	Lintel Length	Safe Load kN	Load Example
600	900	236.6	
900	1200	157.8	
1200	1500	118.3	
1500	1800	94.7	
1800	2100	78.9	
2100	2400	67.6	
2400	2700	58.6	
2700	3000	51.6	
3000	3300	42.7	
3300	3600	35.3	
3600	3900	29.6	
3900	4200	25.3	1500 mm
4200	4500	21.8	masonry
4500	4800	19.0	
4800	5100	16.7	
5100	5400	14.8	
5400	5700	13.2	
5700	6000	11.8	

**Lintel load Capacity Table**

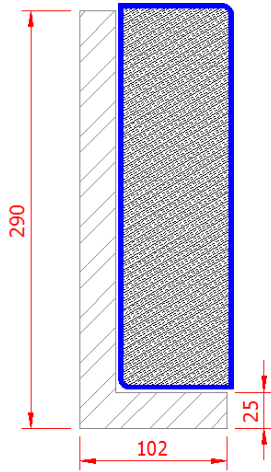
Opening Span	Lintel Length	Safe Load kN	Load Example
600	900	353.2	
900	1200	235.5	
1200	1500	176.6	
1500	1800	141.3	
1800	2100	117.7	
2100	2400	100.9	
2400	2700	87.6	
2700	3000	77.1	
3000	3300	64.7	
3300	3600	53.5	
3600	3900	44.9	Full height
3900	4200	38.3	masonry
4200	4500	33.0	
4500	4800	28.8	1500 mm
4800	5100	25.3	masonry
5100	5400	22.4	
5400	5700	20.0	
5700	6000	17.9	

The section provides a bearing on the top flange with a second bearing at the "foot". Full bricks are laid up to the gauged brick eliminating the need for slips on site. Default material stainless steel SS370 (EN 1.4003) also available in stainless steel LDX2101 (EN 1.4162). Loadings are shown above to assist you in your selection 102.5mm brickwork is 2.2 kN/m<sup>2</sup>. Dimensions can be varied to suit imperial, other brick sizes and thicker slips

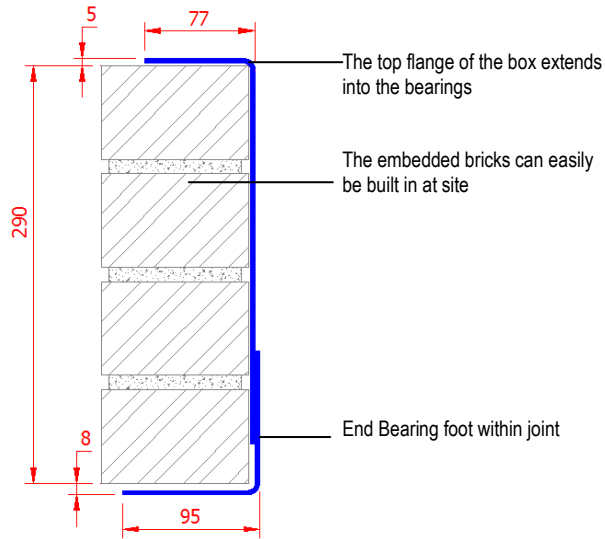
# Brick slip lintels

## B section range 290 mm high

**Section at span:**



**Section at bearing :**



### B290/3

Lintel section properties

lxx	1711.9 cm <sup>4</sup>
Zxx	127.8 cm <sup>3</sup>
Weight	16.3 kg/m
Area	20.4 cm
Ryy	3.5 cm

### B290/4

Lintel section properties

lxx	2279.8 cm <sup>4</sup>
Zxx	169.5 cm <sup>3</sup>
Weight	21.7 kg/m
Area	27.1 cm
Ryy	3.5 cm

### B290/6

Lintel section properties

lxx	3411.8 cm <sup>4</sup>
Zxx	251.7 cm <sup>3</sup>
Weight	32.5 kg/m
Area	40.6 cm
Ryy	3.6 cm

### Lintel load Capacity Table

Opening Span	Lintel Length	Safe Load kN	Load Example
600	900	99.4	
900	1200	99.4	
1200	1500	99.4	
1500	1800	99.4	
1800	2100	99.4	
2100	2400	84.3	
2400	2700	72.8	
2700	3000	63.9	
3000	3300	56.8	
3300	3600	51.0	
3600	3900	46.2	
3900	4200	42.1	Full height masonry
4200	4500	38.1	
4500	4800	33.2	
4800	5100	29.2	1500 mm masonry
5100	5400	25.8	
5400	5700	23.0	
5700	6000	20.7	

### Lintel load Capacity Table

Opening Span	Lintel Length	Safe Load kN	Load Example
600	900	131.83	
900	1200	131.83	
1200	1500	131.83	
1500	1800	131.83	
1800	2100	131.83	
2100	2400	111.85	
2400	2700	96.65	
2700	3000	84.85	
3000	3300	75.44	
3300	3600	67.75	
3600	3900	61.34	
3900	4200	55.93	
4200	4500	50.73	
4500	4800	44.19	Full height masonry
4800	5100	38.84	1500 mm masonry
5100	5400	34.41	
5400	5700	30.69	
5700	6000	27.54	

### Lintel load Capacity Table

Opening Span	Lintel Length	Safe Load kN	Load Example
600	900	195.8	
900	1200	195.8	
1200	1500	195.8	
1500	1800	195.8	
1800	2100	195.8	
2100	2400	166.3	
2400	2700	143.7	
2700	3000	126.2	
3000	3300	112.2	
3300	3600	100.8	
3600	3900	91.3	
3900	4200	83.2	
4200	4500	75.9	
4500	4800	66.1	
4800	5100	58.1	
5100	5400	51.5	Full height masonry
5400	5700	45.9	
5700	6000	41.2	

The section provides a bearing on the top flange with a second bearing at the "foot". Full bricks are laid up to the gauged brick eliminating the need for slips on site. Default material stainless steel SS370 (EN 1.4003) also available in stainless steel LDX2101 (EN 1.4162).

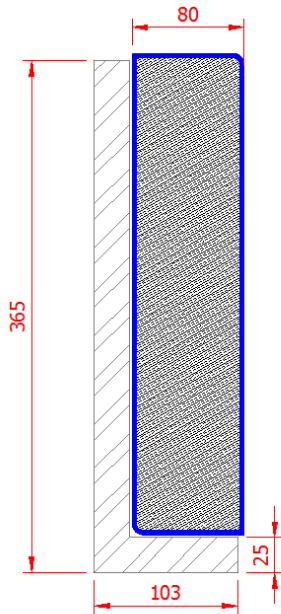
Loadings are shown above to assist you in your selection 102.5mm brickwork is 2.2 kN/m<sup>2</sup>.

Dimensions can be varied to suit imperial, other brick sizes and thicker slips

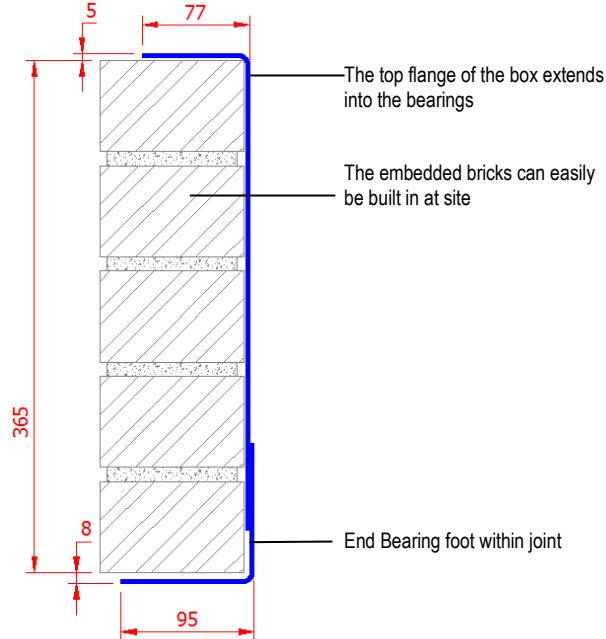
# Brick slip lintels

## B section range 365 mm high

**Section at span:**



**Section at bearing:**



### B365/3

Lintel section properties

Ixx	3251.6 cm <sup>4</sup>
Zxx	189.6 cm <sup>3</sup>
Weight	19.9 kg/m
Area	24.9 cm
Ryy	3.6 cm

### B365/4

Lintel section properties

Ixx	4331.0 cm <sup>4</sup>
Zxx	251.8 cm <sup>3</sup>
Weight	26.5 kg/m
Area	33.1 cm
Ryy	3.6 cm

### B365/6

Lintel section properties

Ixx	6482.7 cm <sup>4</sup>
Zxx	374.7 cm <sup>3</sup>
Weight	39.7 kg/m
Area	49.6 cm
Ryy	3.6 cm

Lintel load Capacity Table

Opening Span	Lintel Length	Safe Load kN	Load Example
600	900	146.2	
900	1200	146.2	
1200	1500	146.2	
1500	1800	146.2	
1800	2100	146.2	
2100	2400	123.5	
2400	2700	106.6	
2700	3000	93.4	
3000	3300	82.9	
3300	3600	74.3	
3600	3900	67.2	
3900	4200	61.1	
4200	4500	55.9	
4500	4800	51.4	
4800	5100	47.5	Full height masonry
5100	5400	44.0	
5400	5700	40.9	
5700	6000	38.2	1500 mm masonry
6000	6300	35.5	

Lintel load Capacity Table

Opening Span	Lintel Length	Safe Load kN	Load Example
600	900	194.2	
900	1200	194.2	
1200	1500	194.2	
1500	1800	194.2	
1800	2100	194.2	
2100	2400	164.1	
2400	2700	141.6	
2700	3000	124.1	
3000	3300	110.2	
3300	3600	98.8	
3600	3900	89.3	
3900	4200	81.2	
4200	4500	74.3	
4500	4800	68.4	
4800	5100	63.1	
5100	5400	58.5	
5400	5700	54.4	Full height masonry
5700	6000	50.8	
6000	6300	47.2	

Lintel load Capacity Table

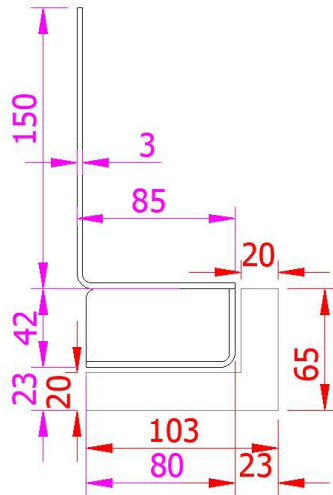
Opening Span	Lintel Length	Safe Load kN	Load Example
600	900	289.3	
900	1200	289.3	
1200	1500	289.3	
1500	1800	289.3	
1800	2100	289.3	
2100	2400	244.5	
2400	2700	211.0	
2700	3000	185.0	
3000	3300	164.2	
3300	3600	147.2	
3600	3900	133.1	
3900	4200	121.1	
4200	4500	110.9	
4500	4800	102.0	
4800	5100	94.2	
5100	5400	87.4	
5400	5700	81.3	
5700	6000	75.8	Full height masonry
6000	6300	70.7	

The section provides a bearing on the top flange with a second bearing at the "foot". Full bricks are laid up to the gauged brick eliminating the need for slips on site. Default material stainless steel SS370 (EN 1.4003) also available in stainless steel LDX2101 (EN 1.4162). Loadings are shown above to assist you in your selection 102.5mm brickwork is 2.2 kN/m<sup>2</sup>. Dimensions can be varied to suit imperial, other brick sizes and thicker slips

## Brick slip lintels

### L section range light duty 65 x 103 mm

Section at span:



**L 65-103**

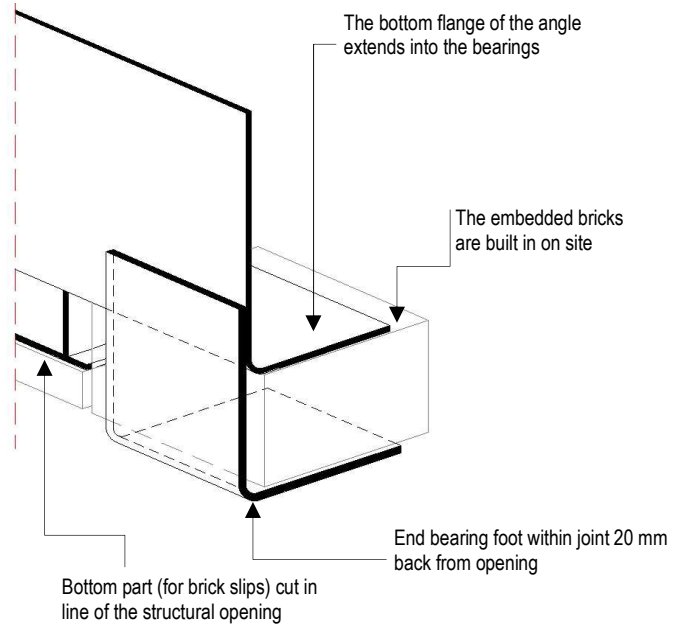
Lintel section properties

Ixx	332.1	cm <sup>4</sup>
Zxx	45.3	cm <sup>3</sup>
Weight	8.3	Kg/m
Area	10.3	cm <sup>2</sup>
Ryy	3.14	cm

Lintel load Capacity Table

Opening Span	Lintel Length	Safe Load kN
600	900	34.0
750	1050	34.0
900	1200	34.0
1050	1350	34.0
1200	1500	34.0
1350	1650	34.0
1500	1800	31.9
1650	1950	29.0
1800	2100	26.6
1950	2250	24.6
2100	2400	22.8
2250	2550	21.3
2400	2700	20.0

Section at bearing:



This section uses an LA lintel with an additional angle to support a 65 mm high x 103 mm soffit. Other dimensions to suit different size bricks also available.

The section provides a bearing on the bottom flange with second bearing at the "foot".

Default material stainless steel SS370 (EN 1.4003) also available in stainless steel LDX2101 (EN 1.4162) or S250GD + Z600.

The safe working load SWL represent the maximum factored load uniform distributed load the lintel can carry. 102.5 mm width brickwork is taken as 2.2 kN/m<sup>2</sup>.

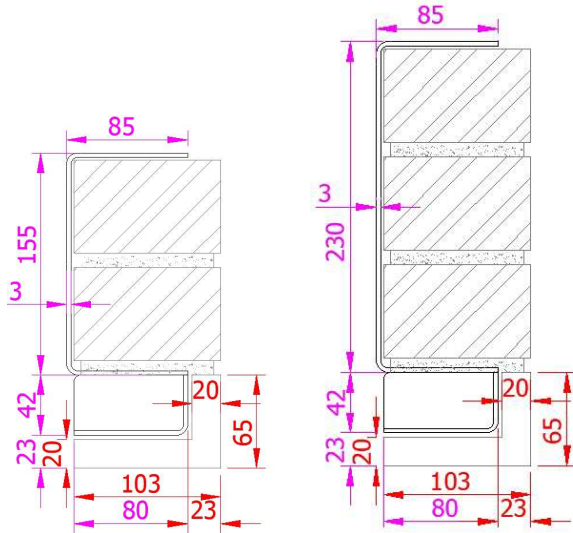
**Bearings;** min 150mm each side, for high loads longer bearings may be needed, and bearing stresses should be checked



# Brick slip lintels

## L section range medium duty 65 x 103 mm

Section at span:



**C 65-103 / H215**

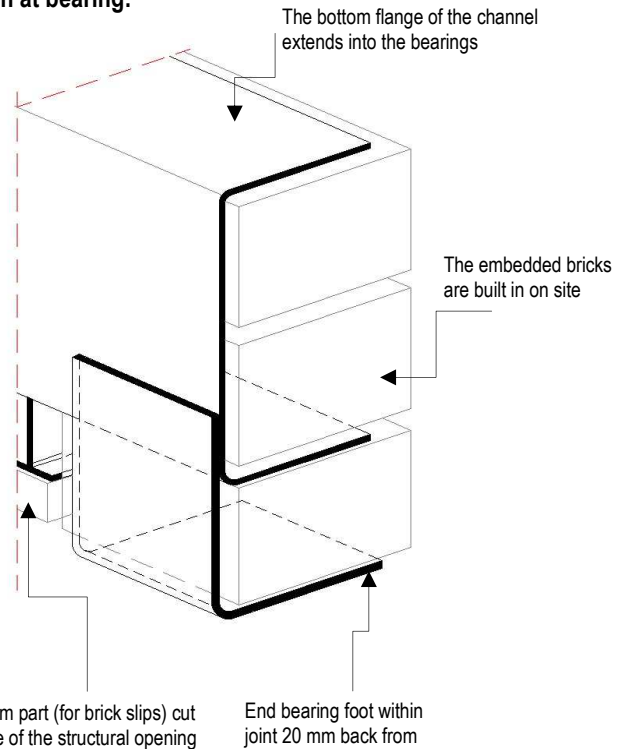
Lintel section properties

Ixx	682.0	cm <sup>4</sup>
Zxx	82.3	cm <sup>3</sup>
Weight	10.3	Kg/m
Area	12.8	cm <sup>2</sup>
Ryy	3.06	cm

Lintel load Capacity Table

Opening Span	Lintel Length	Safe Load kN
600	900	42.0
750	1050	42.0
900	1200	42.0
1050	1350	42.0
1200	1500	42.0
1350	1650	42.0
1500	1800	42.0
1650	1950	42.0
1800	2100	38.9
1950	2250	35.9
2100	2400	33.4
2250	2550	31.1
2400	2700	29.2
2550	2850	27.5
2700	3000	26.0
2850	3150	24.6
3000	3300	23.4

Section at bearing:



**C 65-103 / H290**

Lintel section properties

Ixx	1505.6	cm <sup>4</sup>
Zxx	134.7	cm <sup>3</sup>
Weight	12.1	Kg/m
Area	15.1	cm <sup>2</sup>
Ryy	3.03	cm

Lintel load Capacity Table

Opening Span	Lintel Length	Safe Load kN
600	900	55.0
750	1050	55.0
900	1200	55.0
1050	1350	55.0
1200	1500	55.0
1350	1650	55.0
1500	1800	55.0
1650	1950	55.0
1800	2100	55.0
1950	2250	52.8
2100	2400	51.7
2250	2550	49.1
2400	2700	45.0
2550	2850	43.2
2700	3000	41.0
2850	3150	37.0
3000	3300	35.6

This section uses a CS or CM lintel with an additional angle to support a 65 mm high x 103mm soffit. Other dimensions to suit different size bricks also available.

The section provides a bearing on the bottom flange with second bearing at the "foot".

Default material stainless steel SS370 (EN 1.4003) also available in stainless steel LDX2101 (EN 1.4162) or S250GD + Z600.

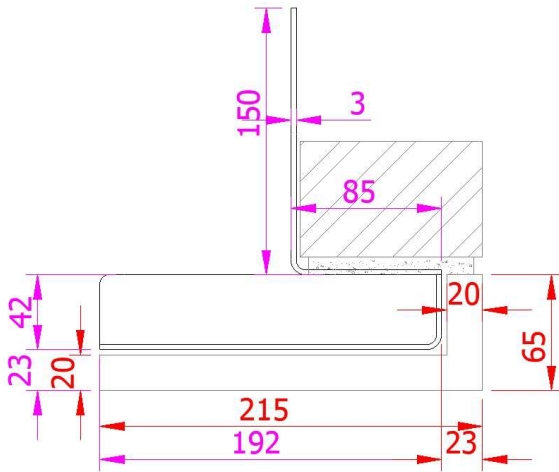
The safe working load SWL represent the maximum factored load uniform distributed load the lintel can carry. 102.5 mm width brickwork is taken as 2.2 kN/m<sup>2</sup>.

**Bearings;** min 150mm each side, for high loads longer bearings may be needed, and bearing stresses should be checked

## Brick slip lintels

### L section range light duty 65 x 215 mm

Section at span:



#### L 65-215

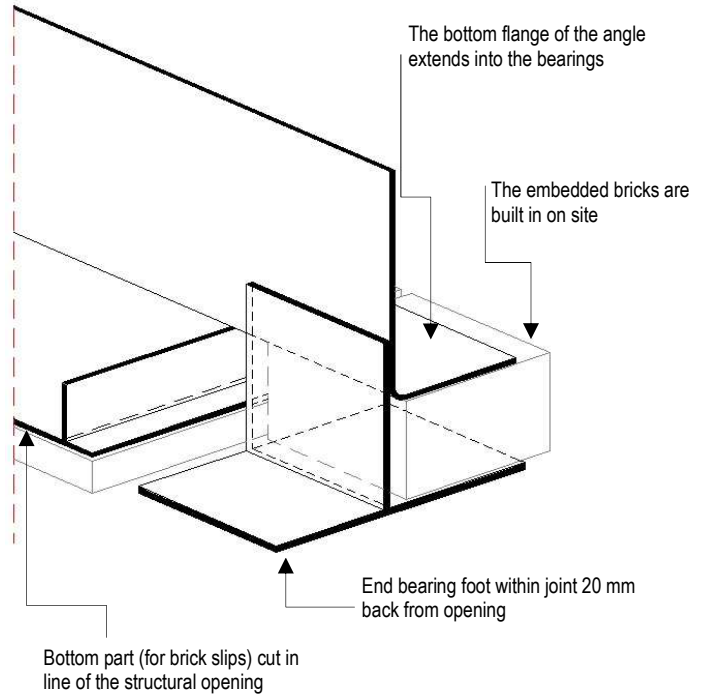
##### Lintel section properties

Ixx	430.8	cm <sup>4</sup>
Zxx	59.4	cm <sup>3</sup>
Weight	10.9	Kg/m
Area	13.7	cm <sup>2</sup>
Ryy	4.72	cm

##### Lintel load Capacity Table

Opening Span	Lintel Length	Safe Load kN
600	900	49.0
750	1050	49.0
900	1200	49.0
1050	1350	49.0
1200	1500	49.0
1350	1650	49.0
1500	1800	49.0
1650	1950	49.0
1800	2100	45.4
1950	2250	41.9
2100	2400	38.3
2250	2550	33.4
2400	2700	29.4

Section at bearing:



This section uses an LA lintel with an additional angle to support a 65 mm high x 215 mm soffit. Other dimensions to suit different size bricks also available.

The section provides a bearing on the bottom flange with second bearing at the "foot".

Default material stainless steel SS370 (EN 1.4003) also available in stainless steel LDX2101 (EN 1.4162) or S250GD + Z600.

The safe working load SWL represent the maximum factored load uniform distributed load the lintel can carry. 102.5 mm width brickwork is taken as 2.2 kN/m<sup>2</sup>.

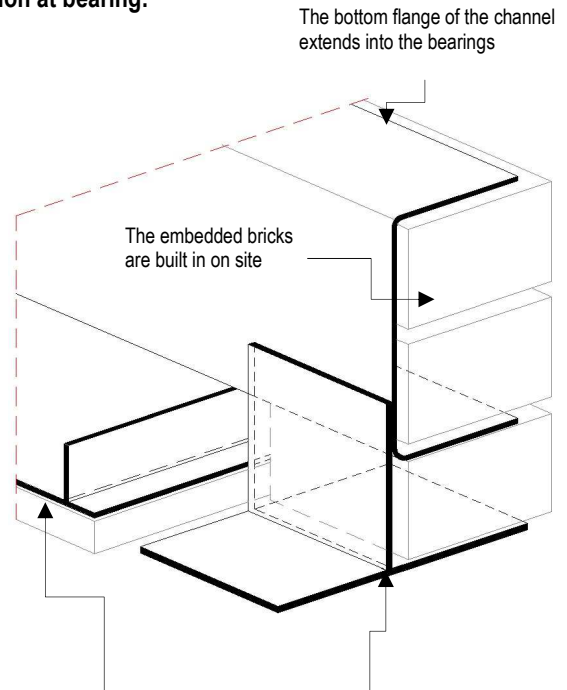
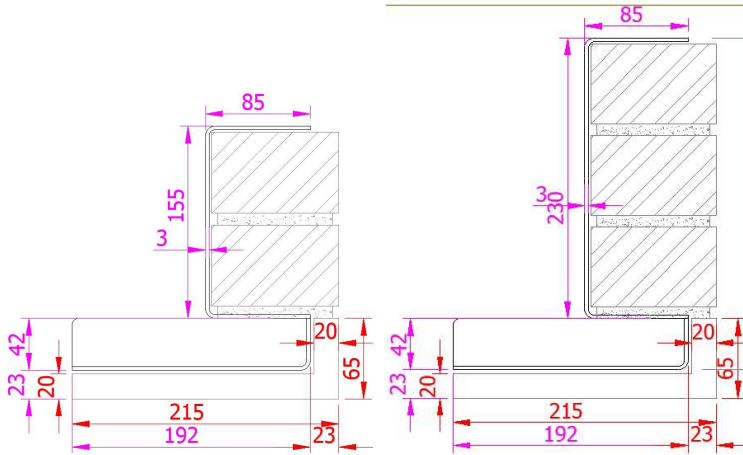
**Bearings;** min 150mm each side, for high loads longer bearings may be needed, and bearing stresses should be checked

# Brick slip lintels

## L section range medium duty 65 x 215 mm

Section at span:

Section at bearing:



### C 65-215 / H215

Lintel section properties

Ixx	889.1	cm <sup>4</sup>
Zxx	97.7	cm <sup>3</sup>
Weight	12.9	Kg/m
Area	16.2	cm <sup>2</sup>
Ryy	4.6	cm

### Lintel load Capacity Table

Opening Span	Lintel Length	Safe Load kN
600	900	54.0
750	1050	54.0
900	1200	54.0
1050	1350	54.0
1200	1500	54.0
1350	1650	54.0
1500	1800	54.0
1650	1950	54.0
1800	2100	54.0
1950	2250	54.0
2100	2400	54.0
2250	2550	51.1
2400	2700	47.9
2550	2850	45.0
2700	3000	42.5
2850	3150	40.3
3000	3300	38.3

### C 65-215 / H290

Lintel section properties

Ixx	1911.8	cm <sup>4</sup>
Zxx	158.1	cm <sup>3</sup>
Weight	14.8	Kg/m
Area	18.5	cm <sup>2</sup>
Ryy	4.33	cm

### Lintel load Capacity Table

Opening Span	Lintel Length	Safe Load kN
600	900	64.0
750	1050	64.0
900	1200	64.0
1050	1350	64.0
1200	1500	64.0
1350	1650	64.0
1500	1800	64.0
1650	1950	64.0
1800	2100	64.0
1950	2250	64.0
2100	2400	64.0
2250	2550	64.0
2400	2700	62.8
2550	2850	58.5
2700	3000	54.7
2850	3150	51.3
3000	3300	48.2

Bottom part (for brick slips) cut in line of the structural opening

End bearing foot within joint 20 mm back from

This section uses a CS or CM lintel with an additional angle to support a 65 mm high x 215 mm soffit. Other dimensions to suit different size bricks also available.

The section provides a bearing on the bottom flange with second bearing at the "foot".

Default material stainless steel SS370 (EN 1.4003) also available in stainless steel LDX2101 (EN 1.4162) or S250GD + Z600.

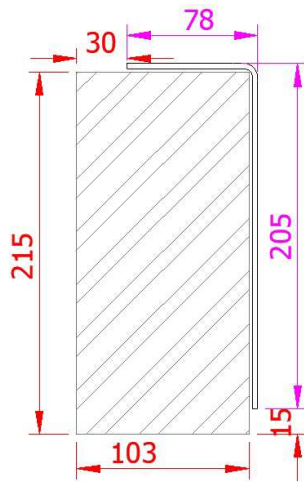
The safe working load SWL represent the maximum factored load uniform distributed load the lintel can carry. 102.5 mm width brickwork is taken as 2.2 kN/m<sup>2</sup>.

**Bearings;** min 150mm each side, for high loads longer bearings may be needed, and bearing stresses should be checked

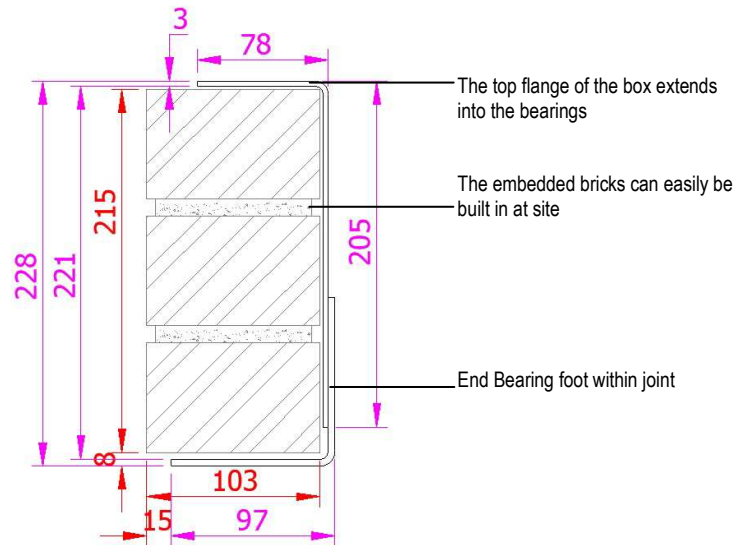
## Brick tray

### T section range end bearing detail

Section at span:

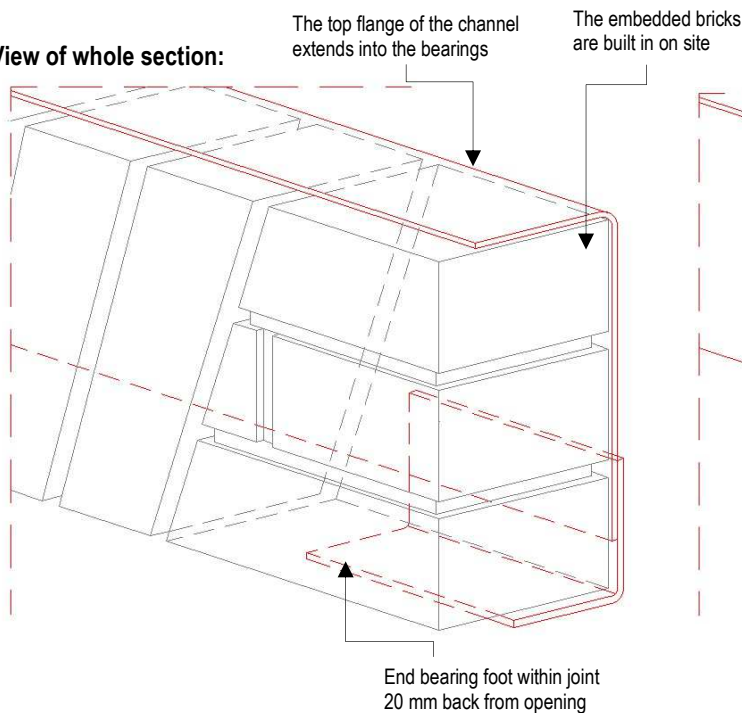


Section at bearing:

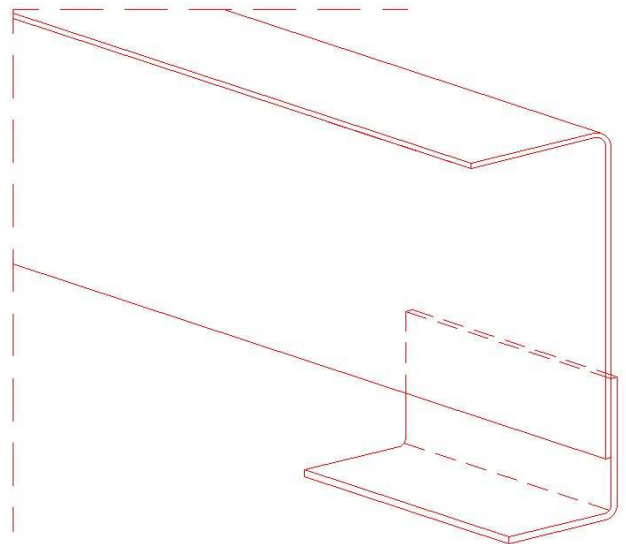


C 215/, C290/3, C365/3 are light duty sections of B215/3, B290/3 and B365/3. Both C and B ranges suit soldier course or gauged brick arches. Slips are 25 mm as standard, 30 mm or other slip sizes can also be used.

View of whole section:



View of the steel:



The section provides a bearing on the top flange with second bearing at the "foot".

Default material stainless steel SS370 (EN 1.4003) also available in stainless steel LDX2101 (EN 1.4162) or S250GD + Z600.

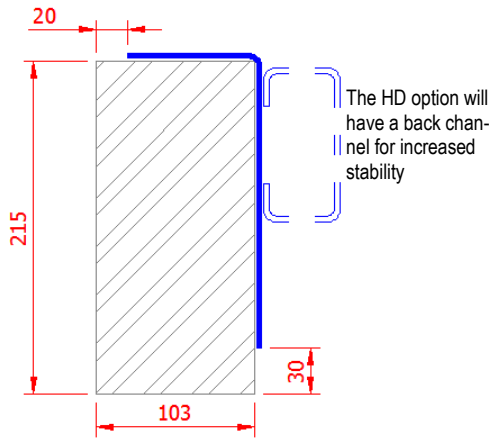
The safe working load SWL represent the maximum factored load uniform distributed load the lintel can carry. 102.5 mm width brickwork is taken as 2.2 kN/m<sup>2</sup>.

**Bearings;** min 150mm each side, for high loads longer bearings may be needed, and bearing stresses should be checked

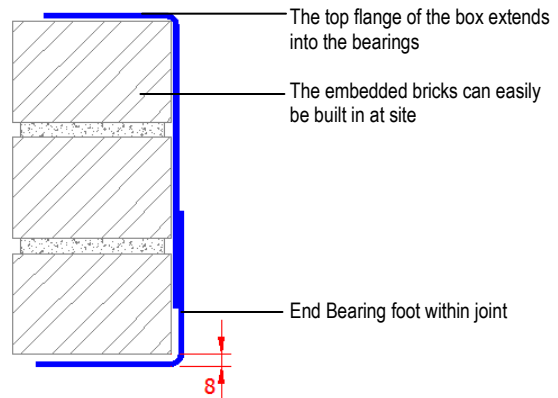
# Brick tray

## T section range Soldier or Gauged brick 215 mm high

### Section at span



### Section at bearing



#### T215/3

Lintel section properties	
Ixx	320.5576 cm <sup>4</sup>
Zxx	26.07 cm <sup>3</sup>
Weight	6.51 kg/m
Area	8.14 cm
Ryy	2.42 cm

#### T215/4

Lintel section properties	
Ixx	431.0153 cm <sup>4</sup>
Zxx	34.95 cm <sup>3</sup>
Weight	8.70 kg/m
Area	10.88 cm
Ryy	2.44 cm

#### T215/6

Lintel section properties	
Ixx	657.2241 cm <sup>4</sup>
Zxx	53.00 cm <sup>3</sup>
Weight	13.13 kg/m
Area	16.41 cm
Ryy	2.48 cm

#### T215/4-HD

Lintel section properties	
Ixx	582.6099 cm <sup>4</sup>
Zxx	45.01 cm <sup>3</sup>
Weight	15.91 kg/m
Area	19.89 cm
Ryy	3.16 cm

#### Lintel load Capacity Table

Opening Span	Lintel Length	Safe Load kN
600	900	40.0
900	1200	26.6
1200	1500	20.0
1500	1800	16.0
1800	2100	13.3
2100	2400	11.4
2400	2700	10.0

#### Lintel load Capacity Table

Opening Span	Lintel Length	Safe Load kN
600	900	53.6
900	1200	35.7
1200	1500	26.8
1500	1800	21.4
1800	2100	17.9
2100	2400	15.3
2400	2700	13.4
2700	3000	11.9

#### Lintel load Capacity Table

Opening Span	Lintel Length	Safe Load kN
600	900	81.3
900	1200	54.2
1200	1500	40.6
1500	1800	32.5
1800	2100	27.1
2100	2400	23.2
2400	2700	20.3
2700	3000	18.1
3000	3300	16.3
3300	3600	14.8

#### Lintel load Capacity Table

Opening Span	Lintel Length	Safe Load kN
600	900	69.0
900	1200	46.0
1200	1500	34.5
1500	1800	27.6
1800	2100	23.0
2100	2400	19.7
2400	2700	17.3
2700	3000	15.3
3000	3300	13.8
3300	3600	12.5

Our unique bearings allow site brickwork to be build butting the lintel, this system gives both a high and low level bearing.

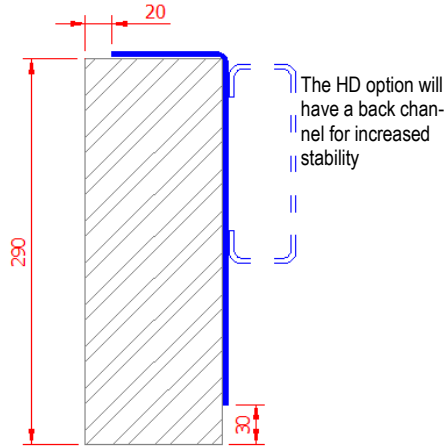
The section provides a bearing on the top flange with a second bearing at the "foot". The bricks at the bearing also fully fill between the top and bottom bearing.

Loadings are shown above to assist you in your selection 102.5mm brickwork is 2.2 kN/m<sup>2</sup> 215mm dimensions can be varied to suit imperial and other brick sizes

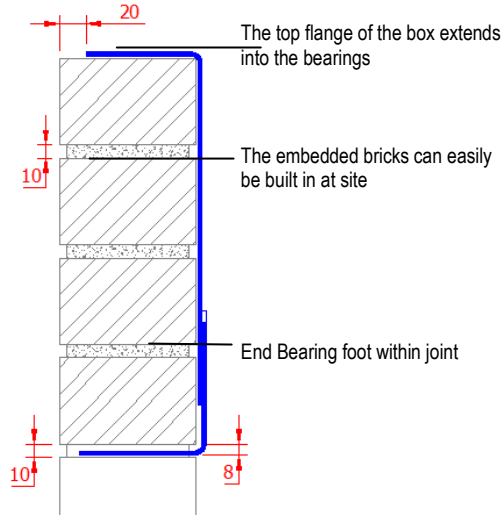
# Brick tray

## T section range Soldier or Gauged brick 290 mm high

### Section at span



### Section at bearing



#### T290/3

##### Lintel section properties

lxx	763 cm <sup>4</sup>
Zxx	47.38 cm <sup>3</sup>
Weight	8.13 kg/m
Area	10.17 cm
Ryy	1.98 cm

#### T290/4

##### Lintel section properties

lxx	1024 cm <sup>4</sup>
Zxx	63.40 cm <sup>3</sup>
Weight	10.80 kg/m
Area	13.59 cm
Ryy	2.00 cm

#### T290/6

##### Lintel section properties

lxx	1599 cm <sup>4</sup>
Zxx	97.00 cm <sup>3</sup>
Weight	16.70 kg/m
Area	20.91 cm
Ryy	2.20 cm

#### T290/4-HD

##### Lintel section properties

lxx	1323 cm <sup>4</sup>
Zxx	72.00 cm <sup>3</sup>
Weight	18.30 kg/m
Area	22.89 cm
Ryy	2.90 cm

#### Lintel load Capacity Table

Opening Span	Lintel Length	Safe Load kN
600	900	72.6
900	1200	48.4
1200	1500	36.3
1500	1800	29.1
1800	2100	24.2
2100	2400	20.8
2400	2700	18.2
2700	3000	16.1
3000	3300	14.5

#### Lintel load Capacity Table

Opening Span	Lintel Length	Safe Load kN
600	900	97.2
900	1200	64.8
1200	1500	48.6
1500	1800	38.9
1800	2100	32.4
2100	2400	27.8
2400	2700	24.3
2700	3000	21.6
3000	3300	19.4
3300	3600	17.7

#### Lintel load Capacity Table

Opening Span	Lintel Length	Safe Load kN
600	900	148.7
900	1200	99.2
1200	1500	74.4
1500	1800	59.5
1800	2100	49.6
2100	2400	42.5
2400	2700	37.2
2700	3000	33.1
3000	3300	29.7
3300	3600	27.0
3600	3900	24.8
3900	4200	22.9

#### Lintel load Capacity Table

Opening Span	Lintel Length	Safe Load kN
600	900	110.4
900	1200	73.6
1200	1500	55.2
1500	1800	44.2
1800	2100	36.8
2100	2400	31.5
2400	2700	27.6
2700	3000	24.5
3000	3300	22.1
3300	3600	20.1
3600	3900	18.4

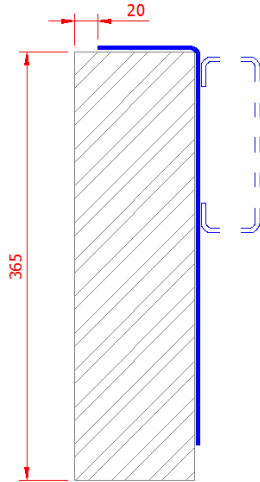
The section provides a bearing on the top flange with a second bearing at the "foot". The bricks at the bearing also fully fill between the top and bottom bearing.

Loadings are shown above to assist you in your selection 102.5mm brickwork is 2.2 kN/m<sup>2</sup> 215mm dimensions can be varied to suit imperial and other brick sizes

# Brick tray

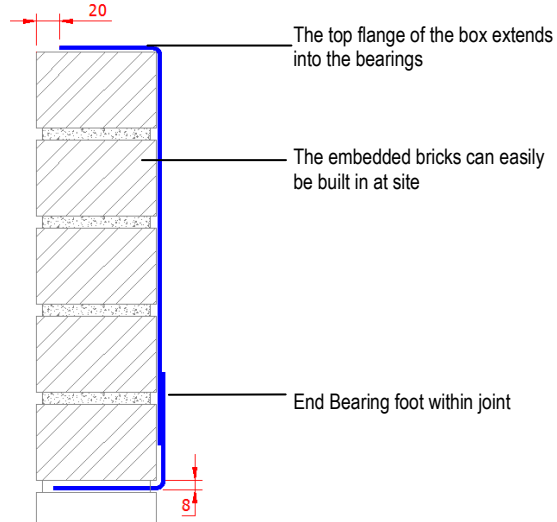
## T section range Soldier or Gauged brick 365 mm high

### Section at span



The HD option will have a back channel for increased stability

### Section at bearing



T365/3	
Lintel section properties	
Ixx	1540 cm <sup>4</sup>
Zxx	76.10 cm <sup>3</sup>
Weight	10.10 kg/m
Area	12.60 cm
Ryy	2.00 cm

T365/4	
Lintel section properties	
Ixx	2064 cm <sup>4</sup>
Zxx	101.00 cm <sup>3</sup>
Weight	13.50 kg/m
Area	16.88 cm
Ryy	2.05 cm

T365/6	
Lintel section properties	
Ixx	3128 cm <sup>4</sup>
Zxx	153.00 cm <sup>3</sup>
Weight	20.33 kg/m
Area	25.40 cm
Ryy	2.09 cm

T365/4 - HD	
Lintel section properties	
Ixx	2557 cm <sup>4</sup>
Zxx	111.00 cm <sup>3</sup>
Weight	20.50 kg/m
Area	25.70 cm
Ryy	2.75 cm

Lintel load Capacity Table		
Opening Span	Lintel Length	Safe Load kN
600	900	116.7
900	1200	77.8
1200	1500	58.3
1500	1800	46.7
1800	2100	38.9
2100	2400	33.3
2400	2700	29.2
2700	3000	25.9
3000	3300	23.3
3300	3600	21.2
3600	3900	19.4

Lintel load Capacity Table		
Opening Span	Lintel Length	Safe Load kN
600	900	154.9
900	1200	103.2
1200	1500	77.4
1500	1800	61.9
1800	2100	51.6
2100	2400	44.2
2400	2700	38.7
2700	3000	34.4
3000	3300	31.0
3300	3600	28.2
3600	3900	25.8
3900	4200	23.8

Lintel load Capacity Table		
Opening Span	Lintel Length	Safe Load kN
600	900	234.6
900	1200	156.4
1200	1500	117.3
1500	1800	93.8
1800	2100	78.2
2100	2400	67.0
2400	2700	58.7
2700	3000	52.1
3000	3300	46.9
3300	3600	42.7
3600	3900	39.1
3900	4200	36.1
4200	4500	33.5
4500	4800	31.3

Lintel load Capacity Table		
Opening Span	Lintel Length	Safe Load kN
600	900	170.2
900	1200	113.5
1200	1500	85.1
1500	1800	68.1
1800	2100	56.7
2100	2400	48.6
2400	2700	42.6
2700	3000	37.8
3000	3300	34.0
3300	3600	30.9
3600	3900	28.4
3900	4200	26.2
4200	4500	24.3

Our unique bearings allow site brickwork to be build butting the brick slip arch, this system gives both a high and low level bearing.

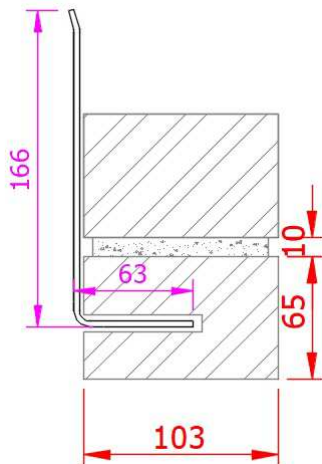
The section provides a bearing on the top flange with a second bearing at the "foot". The bricks at the bearing also fully fill between the top and bottom bearing.

Loadings are shown above to assist you in your selection 102.5mm brickwork is 2.2 kN/m<sup>2</sup> 215mm dimensions can be varied to suit imperial and other brick sizes

# Brick tray

## CC Range Stretcher bond LA160 65 x 103, LA215 65-103

Section at span:



**CC LA160 65-103**

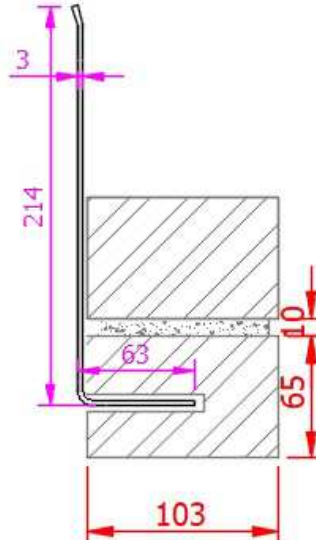
Lintel section properties

Ixx	263.1	cm <sup>4</sup>
Zxx	24.4	cm <sup>3</sup>
Weight	6.2	Kg/m
Area	7.9	cm <sup>2</sup>
Ryy	2.6	cm

Lintel load Capacity Table

Opening Span	Lintel Length	Safe Load kN
600	900	13.0
750	1050	13.0
900	1200	13.0
1050	1350	13.0
1200	1500	13.0
1350	1650	10.0
1500	1800	9.0
1650	1950	8.0
1800	2100	8.0
1950	2250	7.0

Section at span:



**CC LA215 65-103**

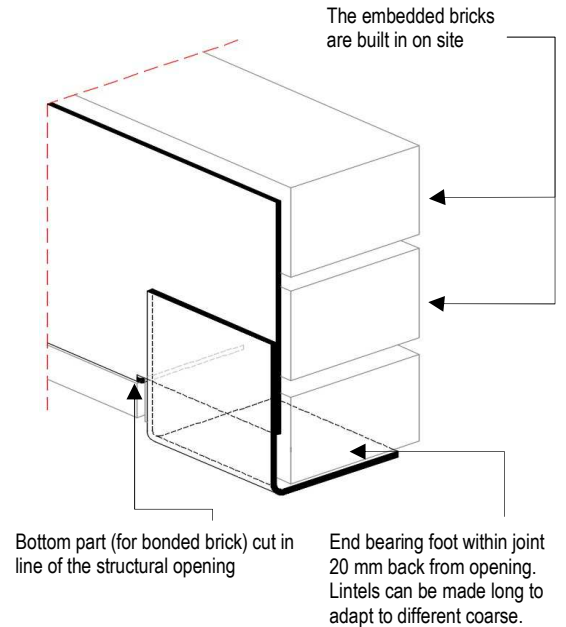
Lintel section properties

Ixx	661.2	cm <sup>4</sup>
Zxx	51.9	cm <sup>3</sup>
Weight	7.4	Kg/m
Area	14.9	cm <sup>2</sup>
Ryy	1.9	cm

Lintel load Capacity Table

Opening Span	Lintel Length	Safe Load kN
600	900	20.0
750	1050	20.0
900	1200	20.0
1050	1350	20.0
1200	1500	20.0
1350	1650	20.0
1500	1800	15.0
1650	1950	15.0
1800	2100	15.0
1950	2250	10.0
2100	2400	10.0
2250	2550	10.0
2400	2700	10.0

Section at bearing:



This section uses a LA160 or LA215 lintel with the brick slotted to produce the fairfaced soffit. The section allows for the brick to be **mechanically fixed** and bonded.

The section provides a bearing on the bottom flange with second bearing at the "foot".

Default material stainless steel SS370 (EN 1.4003) also available in stainless steel LDX2101 (EN 1.4162) or S250GD + Z600.

The safe working load SWL represent the maximum factored load uniform distributed load the lintel can carry. 102.5 mm width brickwork is taken as 2.2 kN/m<sup>2</sup>.

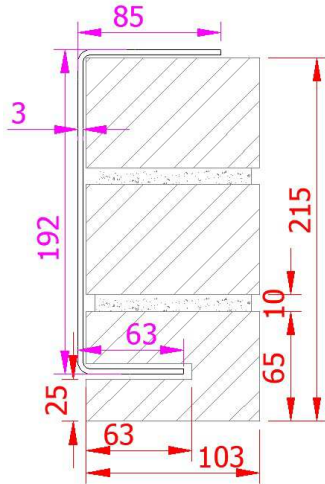
**Bearings;** min 150mm each side, for high loads longer bearings may be needed, and bearing stresses should be checked



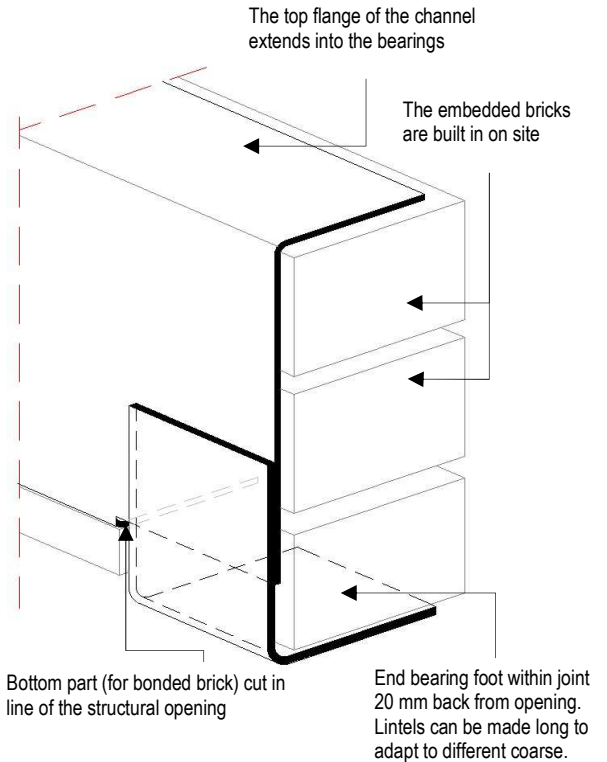
# Brick tray

## CC Range Stretcher bond CS 65-103 mm

Section at span:



Section at bearing:



### CC CS 65-103

#### Lintel section properties

Ixx	535.4	cm <sup>4</sup>
Zxx	65.7	cm <sup>3</sup>
Weight	7.9	Kg/m
Area	9.8	cm <sup>2</sup>
Ryy	7.4	cm

#### Lintel load Capacity Table

Opening Span	Lintel Length	Safe Load kN
600	900	31.0
750	1050	31.0
900	1200	31.0
1050	1350	31.0
1200	1500	31.0
1350	1650	31.0
1500	1800	31.0
1650	1950	28.8
1800	2100	26.5
1950	2250	24.5
2100	2400	22.5
2250	2550	21.4
2400	2700	20.0
2550	2850	18.0
2700	3000	16.8
2850	3150	15.9
3000	3300	14.0

This section uses a CS lintel with the brick slotted to produce the fairfaced soffit. The section allows for the brick to be **mechanically fixed** and bonded.

The section provides a bearing on the bottom flange with second bearing at the "foot".

Default material stainless steel SS370 (EN 1.4003) also available in stainless steel LDX2101 (EN 1.4162) or S250GD + Z600.

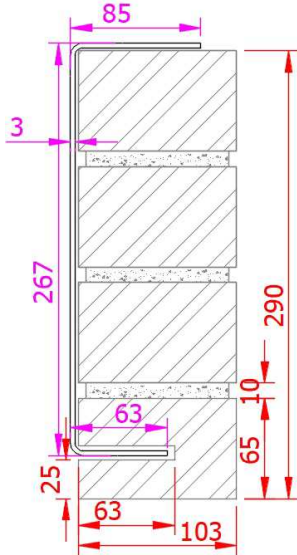
The safe working load SWL represent the maximum factored load uniform distributed load the lintel can carry. 102.5 mm width brickwork is taken as 2.2 kN/m<sup>2</sup>.

**Bearings;** min 150mm each side, for high loads longer bearings may be needed, and bearing stresses should be checked

# Brick tray

## CC Range Stretcher bond CM65-103, CM/4 65-103

Section at span:



**CC CM 65-103**

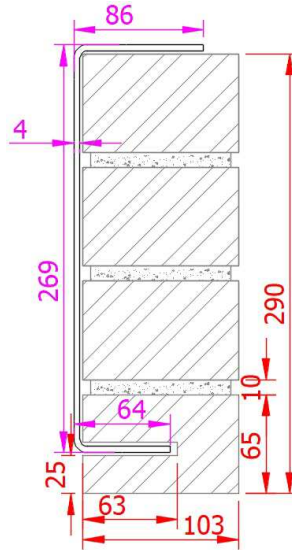
Lintel section properties

lxx	932.9	cm <sup>4</sup>
Zxx	66.8	cm <sup>3</sup>
Weight	9.6	Kg/m
Area	12.2	cm <sup>2</sup>
Ryy	2.9	cm

Lintel load Capacity Table

Opening Span	Lintel Length	Safe Load kN
600	900	30.0
750	1050	30.0
900	1200	30.0
1050	1350	30.0
1200	1500	30.0
1350	1650	25.0
1500	1800	25.0
1650	1950	24.0
1800	2100	20.0
1950	2250	20.0
2100	2400	20.0
2250	2550	17.0
2400	2700	16.0
2550	2850	15.0
2700	3000	15.0
2850	3150	14.0
3000	3300	13.0
3150	3300	12.0
3300	3300	12.0

Section at span:



**CC CM/4 65-103**

Lintel section properties

lxx	1782.3	cm <sup>4</sup>
Zxx	125.7	cm <sup>3</sup>
Weight	13.4	Kg/m
Area	17.0	cm <sup>2</sup>
Ryy	2.3	cm

Lintel load Capacity Table

Opening Span	Lintel Length	Safe Load kN
600	900	40.0
750	1050	40.0
900	1200	40.0
1050	1350	40.0
1200	1500	40.0
1350	1650	35.0
1500	1800	35.0
1650	1950	35.0
1800	2100	30.0
1950	2250	30.0
2100	2400	30.0
2250	2550	30.0
2400	2700	30.0
2550	2850	29.8
2700	3000	28.2
2850	3150	26.8
3000	3300	25.5
3150	3300	24.4
3300	3300	23.3

This section uses a CM or CM/4 lintel with the brick slotted to produce the fairfaced soffit. The section allows for the brick to be **mechanically fixed** and bonded.

The section provides a bearing on the bottom flange with second bearing at the "foot".

Default material stainless steel SS370 (EN 1.4003) also available in stainless steel LDX2101 (EN 1.4162) or S250GD + Z600.

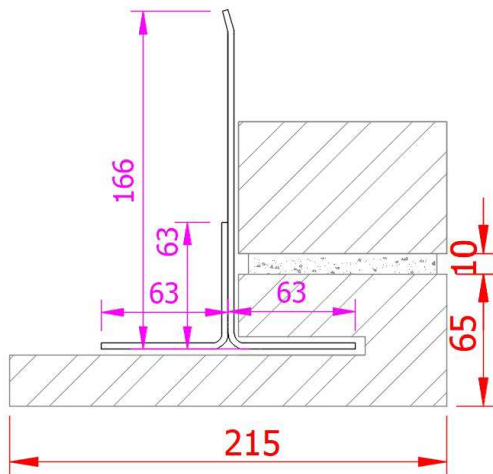
The safe working load SWL represent the maximum factored load uniform distributed load the lintel can carry. 102.5 mm width brickwork is taken as 2.2 kN/m<sup>2</sup>.

**Bearings;** min 150mm each side, for high loads longer bearings may be needed, and bearing stresses should be checked

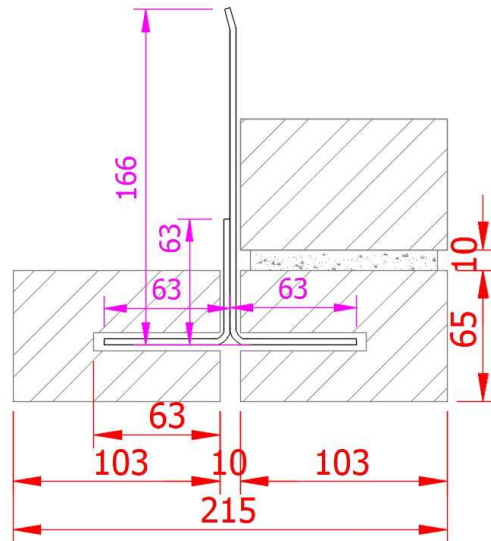
# Brick tray

## CC Range Stretcher bond LA160 65-215

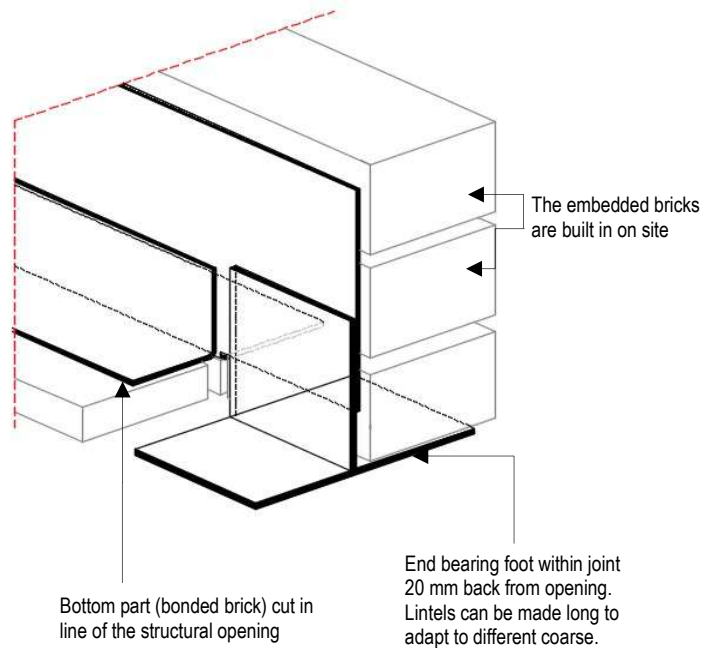
Section at span:



Section at span:



Section at bearing:



### CC LA160 65-215

#### Lintel section properties

Ixx	253.8	cm <sup>4</sup>
Zxx	21.6	cm <sup>3</sup>
Weight	8.7	Kg/m
Area	11.1	cm <sup>2</sup>
Ryy	2.6	cm

#### Lintel load Capacity Table

Opening Span	Lintel Length	Safe Load kN
600	900	20.0
750	1050	20.0
900	1200	20.0
1050	1350	20.0
1200	1500	20.0
1350	1650	18.4
1500	1800	16.7
1650	1950	15.3
1800	2100	14.2
1950	2250	13.1
2100	2400	12.3

This section uses a LA160 lintel with the brick slotted to produce the fairfaced soffit. The section allows for the brick to be **mechanically fixed** and bonded.

The section provides a bearing on the bottom flange with second bearing at the "foot".

Default material stainless steel SS370 (EN 1.4003) also available in stainless steel LDX2101 (EN 1.4162) or S250GD + Z600.

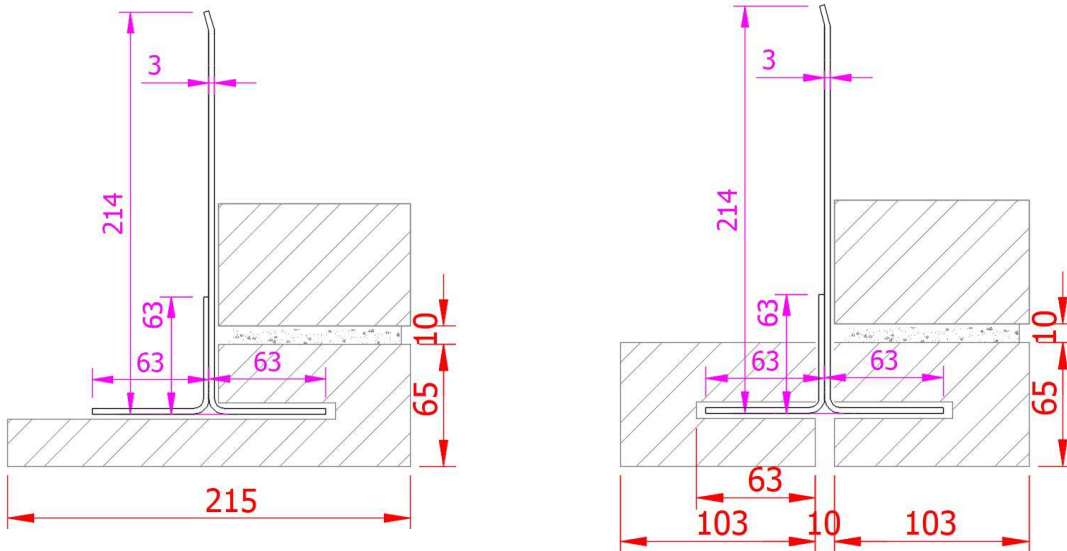
The safe working load SWL represent the maximum factored load uniform distributed load the lintel can carry. 102.5 mm width brickwork is taken as 2.2 kN/m<sup>2</sup>.

**Bearings;** min 150mm each side, for high loads longer bearings may be needed, and bearing stresses should be checked

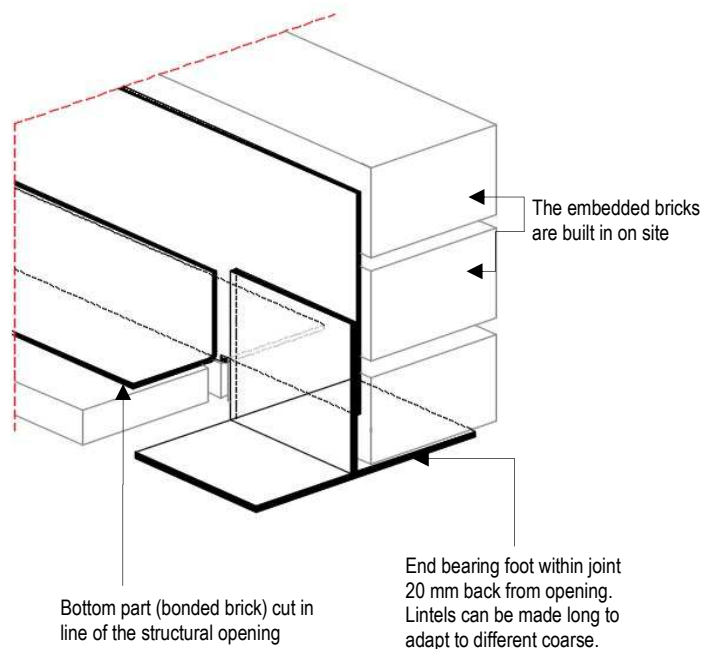
## Brick tray

# CC Range Stretcher bond LA215 65-215

Section at span:



Section at bearing:



This section uses a LA215 lintel with the brick slotted to produce the fairfaced soffit. The section allows for the brick to be **mechanically fixed** and bonded.

### CC LA215 65-215

#### Lintel section properties

Ixx	565.7	cm <sup>4</sup>
Zxx	36.7	cm <sup>3</sup>
Weight	10.0	Kg/m
Area	12.8	cm <sup>2</sup>
Ryy	2.5	cm

#### Lintel load Capacity Table

Opening Span	Lintel Length	Safe Load kN
600	900	26.0
750	1050	26.0
900	1200	26.0
1050	1350	26.0
1200	1500	26.0
1350	1650	26.0
1500	1800	26.0
1650	1950	26.0
1800	2100	24.1
1950	2250	22.4
2100	2400	20.9
2250	2550	19.6
2400	2700	18.4
2550	2850	17.4
2700	3000	16.5

The section provides a bearing on the bottom flange with second bearing at the "foot".

Default material stainless steel SS370 (EN 1.4003) also available in stainless steel LDX2101 (EN 1.4162) or S250GD + Z600.

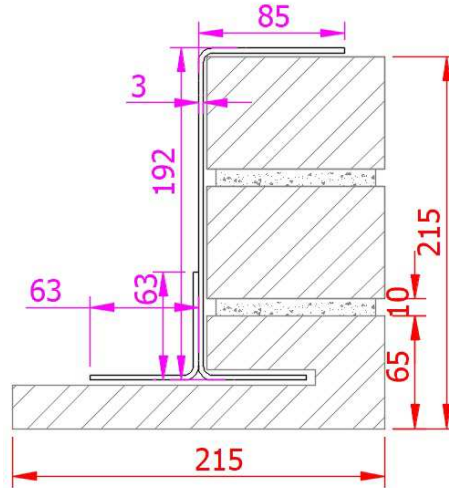
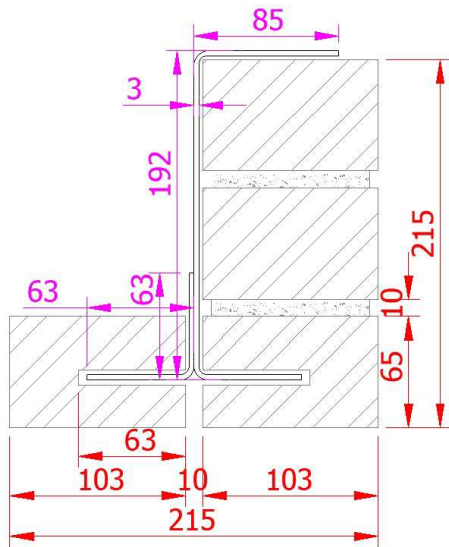
The safe working load SWL represent the maximum factored load uniform distributed load the lintel can carry. 102.5 mm width brickwork is taken as 2.2 kN/m<sup>2</sup>.

**Bearings;** min 150mm each side, for high loads longer bearings may be needed, and bearing stresses should be checked

# Brick tray

## CC Range Stretcher bond CS 65-215

Section at span:



### CC CS 65-215

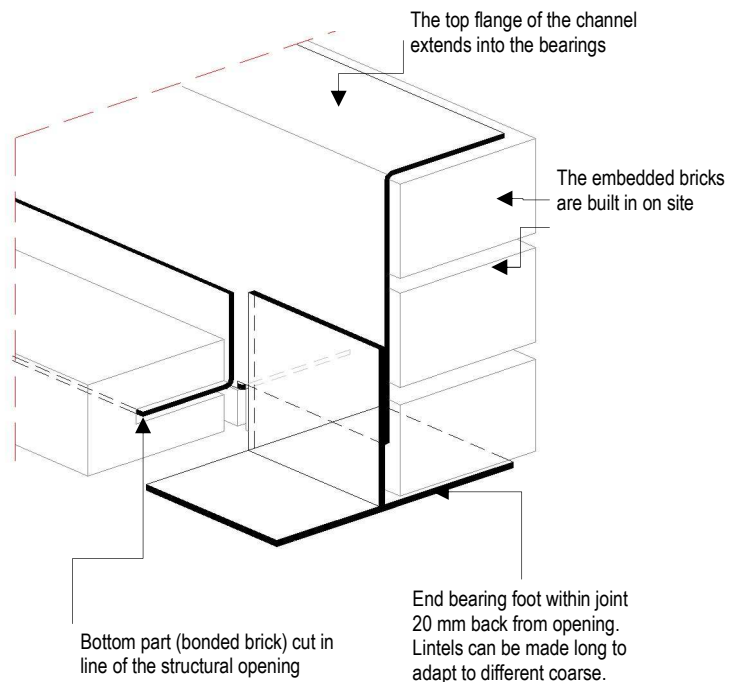
#### Lintel section properties

Ixx	885.7	cm <sup>4</sup>
Zxx	73.6	cm <sup>3</sup>
Weight	11.6	Kg/m
Area	14.7	cm <sup>2</sup>
Ryy	3.0	cm

#### Lintel load Capacity Table

Opening Span	Lintel Length	Safe Load kN
600	900	40.0
750	1050	40.0
900	1200	40.0
1050	1350	40.0
1200	1500	40.0
1350	1650	40.0
1500	1800	40.0
1650	1950	40.0
1800	2100	40.0
1950	2250	40.0
2100	2400	40.0
2250	2550	39.2
2400	2700	36.9
2550	2850	34.9
2700	3000	33.0

Section at bearing:



This section uses a CS lintel with the brick slotted to produce the fairfaced soffit. The section allows for the brick to be **mechanically fixed** and bonded.

The section provides a bearing on the bottom flange with second bearing at the "foot".

Default material stainless steel SS370 (EN 1.4003) also available in stainless steel LDX2101 (EN 1.4162) or S250GD + Z600.

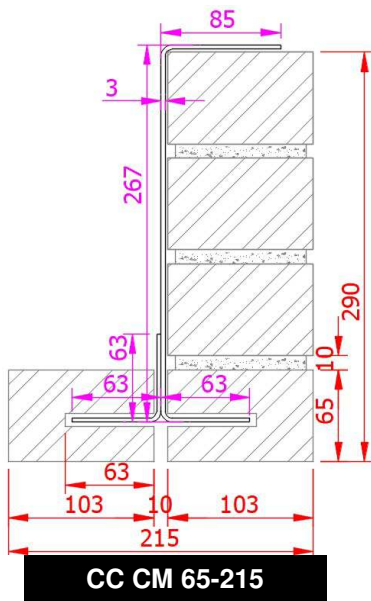
The safe working load SWL represent the maximum factored load uniform distributed load the lintel can carry. 102.5 mm width brickwork is taken as 2.2 kN/m<sup>2</sup>.

**Bearings;** min 150mm each side, for high loads longer bearings may be needed, and bearing stresses should be checked

# Brick tray

## CC Range Stretcher bond CM 65-215

Section at span:



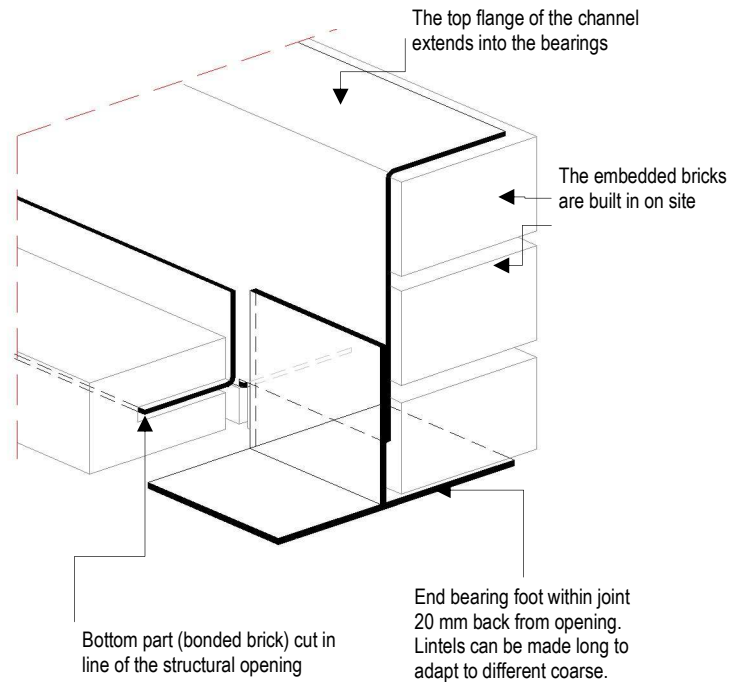
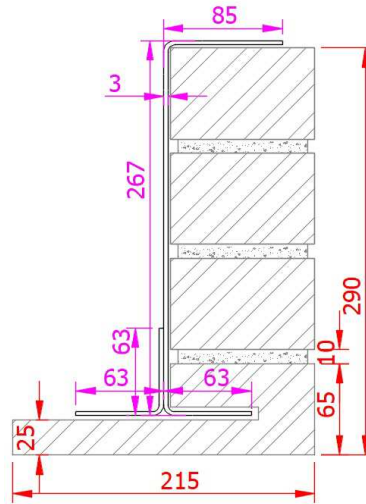
Lintel section properties

Ixx	1761.1	cm <sup>4</sup>
Zxx	110.4	cm <sup>3</sup>
Weight	13.2	Kg/m
Area	16.8	cm <sup>2</sup>
Ryy	2.8	cm

Lintel load Capacity Table

Opening Span	Lintel Length	Safe Load kN
600	900	50.0
750	1050	50.0
900	1200	50.0
1050	1350	50.0
1200	1500	50.0
1350	1650	50.0
1500	1800	50.0
1650	1950	50.0
1800	2100	50.0
1950	2250	50.0
2100	2400	50.0
2250	2550	50.0
2400	2700	50.0
2550	2850	50.0
2700	3000	49.0
2850	3150	47.0
3000	3300	44.8
3150	3450	42.8
3300	3600	40.9
3450	3750	39.2
3600	3900	37.7
3750	4050	36.2
3900	4200	34.9

Section at bearing:



This section uses a CM lintel with the brick slotted to produce the fairfaced soffit. The section allows for the brick to be **mechanically fixed** and bonded.

The section provides a bearing on the bottom flange with second bearing at the "foot".

Default material stainless steel SS370 (EN 1.4003) also available in stainless steel LDX2101 (EN 1.4162) or S250GD + Z600.

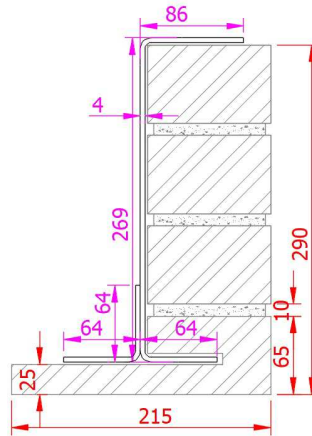
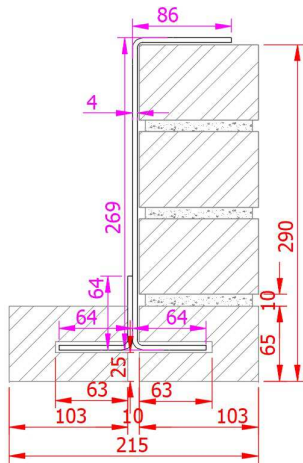
The safe working load SWL represent the maximum factored load uniform distributed load the lintel can carry. 102.5 mm width brickwork is taken as 2.2 kN/m<sup>2</sup>.

**Bearings;** min 150mm each side, for high loads longer bearings may be needed, and bearing stresses should be checked

# Brick tray

## CC Range Stretcher bond CM/4 65-215

Section at span:



### CC CM/4 65-215

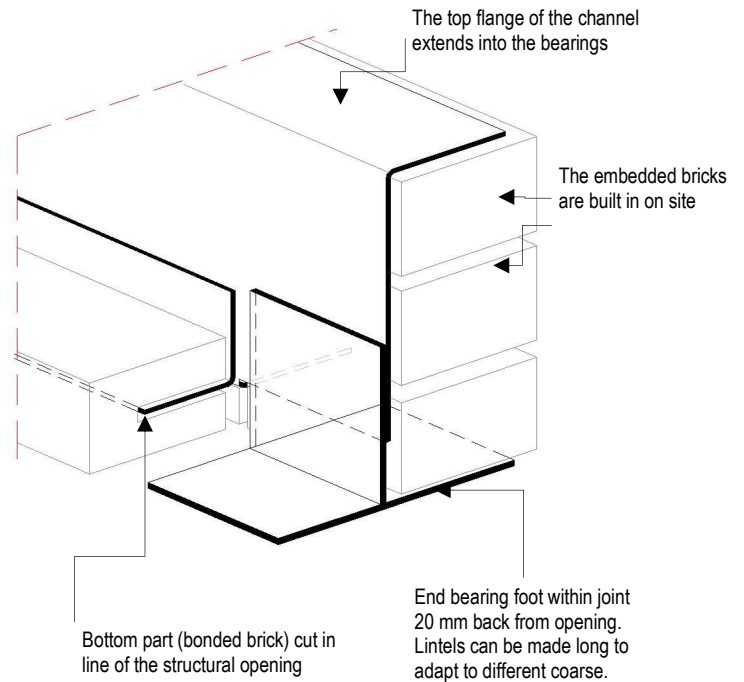
Lintel section properties

Ixx	2330.5	cm <sup>4</sup>
Zxx	146.0	cm <sup>3</sup>
Weight	17.6	Kg/m
Area	22.4	cm <sup>2</sup>
Ryy	2.8	cm

Lintel load Capacity Table

Opening Span	Lintel Length	Safe Load kN
600	900	60.0
750	1050	60.0
900	1200	60.0
1050	1350	60.0
1200	1500	60.0
1350	1650	60.0
1500	1800	60.0
1650	1950	60.0
1800	2100	60.0
1950	2250	60.0
2100	2400	60.0
2250	2550	60.0
2400	2700	60.0
2550	2850	60.0
2700	3000	60.0
2850	3150	60.0
3000	3300	59.3
3150	3450	56.6
3300	3600	54.2
3450	3750	51.9
3600	3900	49.8
3750	4050	47.9
3900	4200	46.1
4050	4350	44.5
4200	4500	42.9
4350	4650	41.5
4500	4800	40.1
4650	4950	38.9

Section at bearing:



This section uses a CM/4 lintel with the brick slotted to produce the fairfaced soffit. The section allows for the brick to be **mechanically fixed** and bonded.

The section provides a bearing on the bottom flange with second bearing at the "foot".

Default material stainless steel SS370 (EN 1.4003) also available in stainless steel LDX2101 (EN 1.4162) or S250GD + Z600.

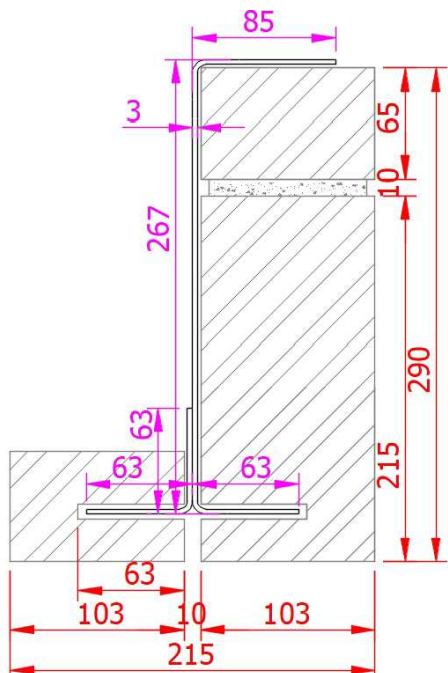
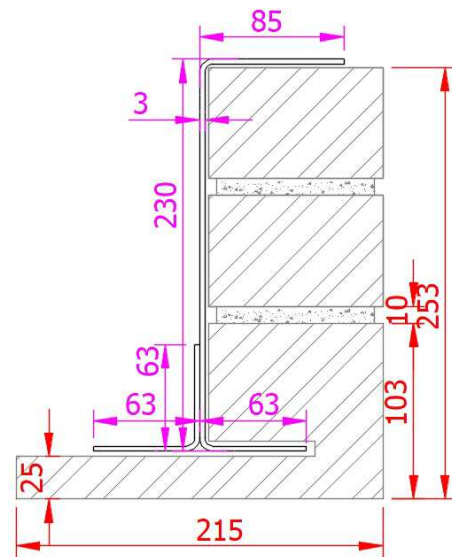
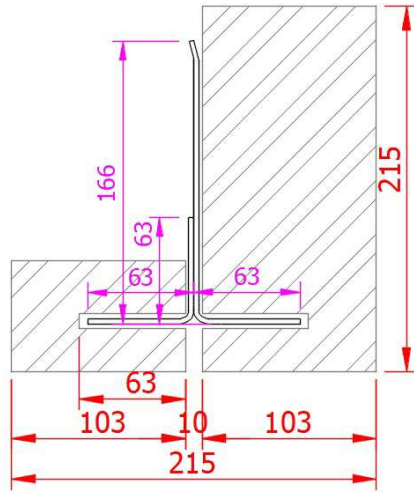
The safe working load SWL represent the maximum factored load uniform distributed load the lintel can carry. 102.5 mm width brickwork is taken as 2.2 kN/m<sup>2</sup>.

**Bearings;** min 150mm each side, for high loads longer bearings may be needed, and bearing stresses should be checked

## Brick tray

### Examples of different brick configurations

Section at span:



There are a few examples for different brick bonds.

CC lintels can be configured for any design and brick bond.

The section provides a bearing on the bottom flange with second bearing at the "foot".

Default material stainless steel SS370 (EN 1.4003) also available in stainless steel LDX2101 (EN 1.4162) or S250GD + Z600.

The safe working load SWL represent the maximum factored load uniform distributed load the lintel can carry. 102.5 mm width brickwork is taken as 2.2 kN/m<sup>2</sup>.

**Bearings;** min 150mm each side, for high loads longer bearings may be needed, and bearing stresses should be checked